

ROOF PLAN - PURLINS TO BE REPLACED AND EXTENT OF WORK

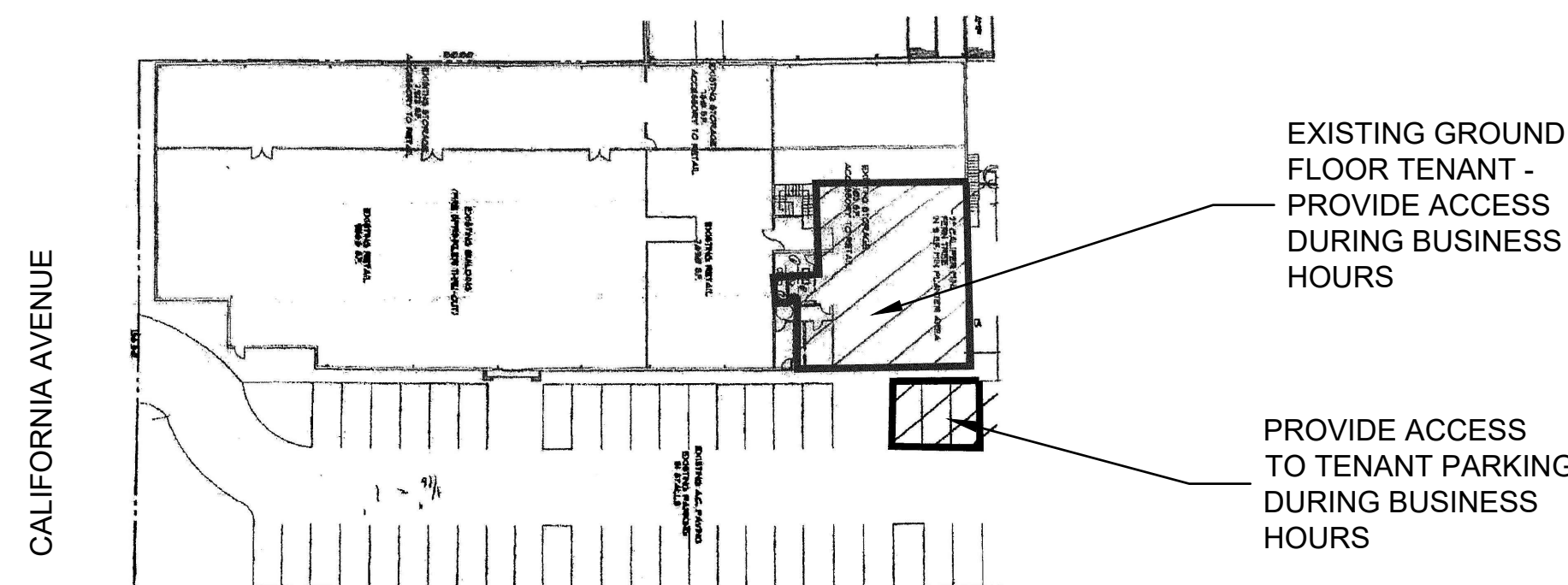
1/8"=1'-0"

LEGEND - REPLACE PURLINS

- P-1 6 PCS. @ 3 FT. = 18 LF
- P-6 ~~10~~ ¹⁰ PCS. @ 3 FT. = ~~30~~ ³⁰ LF
- P-7 ~~16~~ ¹⁶ PCS. @ 3 FT. = ~~48~~ ⁴⁸ LF
- ~~P-12 5 PCS. @ 3 FT. = 15 LF~~
- ~~P-13 20 PCS. @ 3 FT. = 60 LF~~
- P-15 9 PCS. @ 3 FT. = 27 LF
- P-18 ~~23~~ ²³ PCS. @ 3 FT. = ~~69~~ ⁶⁹ LF
- P-19 ~~20~~ ²⁰ PCS. @ 3 FT. = ~~60~~ ⁶⁰ LF

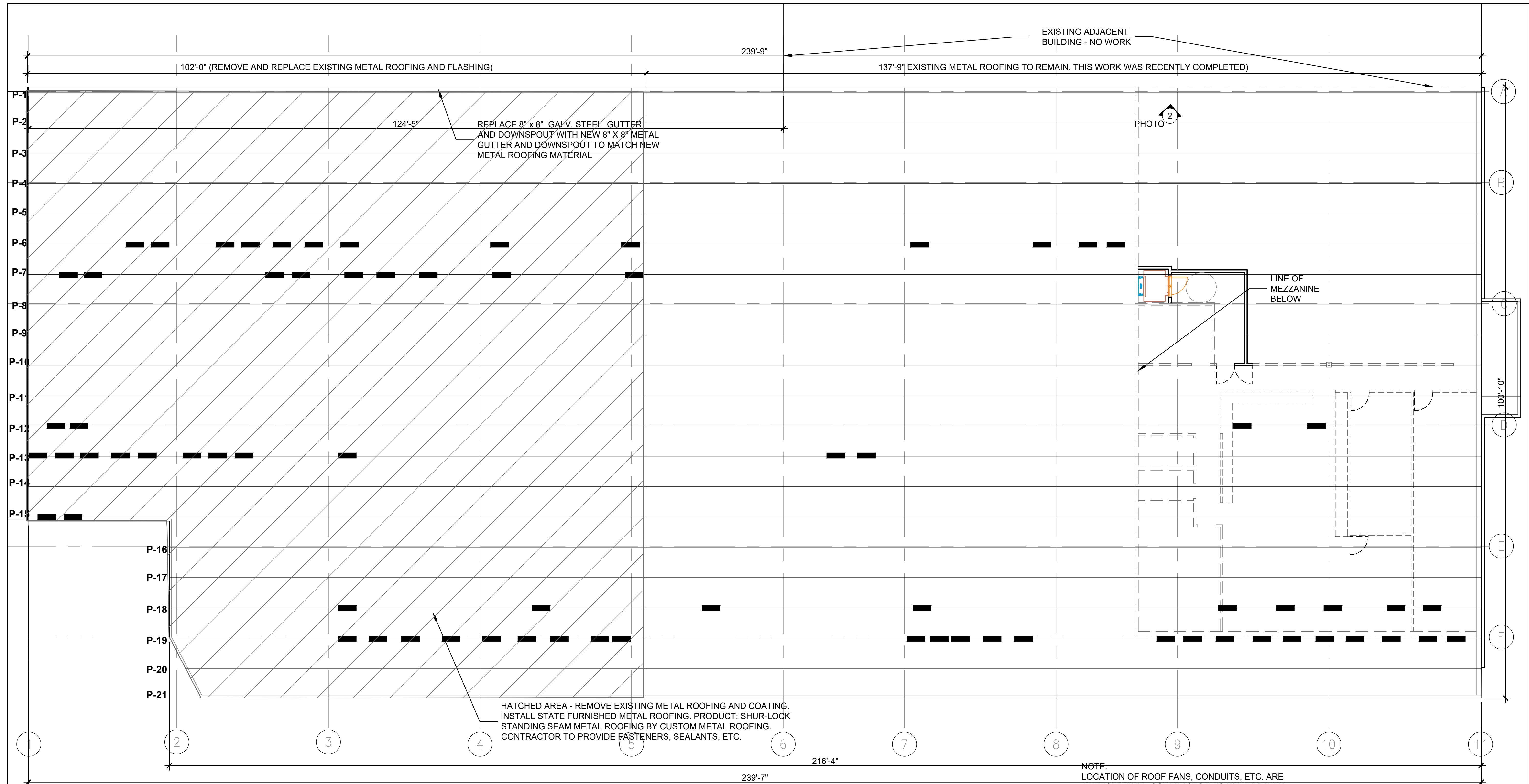
TOTAL PURLINS TO BE REPLACED - ~~424~~ ⁵⁴ PCS. ~~162~~ ¹⁶² LF
 TOTAL L.F. OF PURLINS TO BE REPLACED - ~~372~~ ¹⁶² LF

SITE PLAN
NOT TO SCALE



NOTE:
LOCATION OF ROOF FANS, CONDUITS, ETC. ARE APPROXIMATE. CONTRACTOR TO FIELD VERIFY ALL ITEMS PRIOR TO STARTING WORK.

REVISION NO.	SYM.	DESCRIPTION	SHT./OF	DATE	APPROVED
STATE OF HAWAII DEPARTMENT OF AGRIBUSINESS WAREHOUSE ROOFING IMPROVEMENTS					
ROOF PLAN - REPLACE PURLINS AND EXTENT OF WORK					
DESIGNED: SL	SUBMITTED:				
DRAWN: SL	DATE: MAY 2017				
CHECKED: SL	SCALE: AS NOTED				
APPROVED:	SIGNATURE		DRAWING NO.		
CHIEF ENGINEER	EXPIRATION DATE OF LICENSE: APRIL 30, 2018		A-1		



ROOF PLAN - PURLINS TO BE REPAIRED AND EXTENT OF WORK

1/8"=1'-0"

LEGEND - REPAIR EXISTING PURLINS

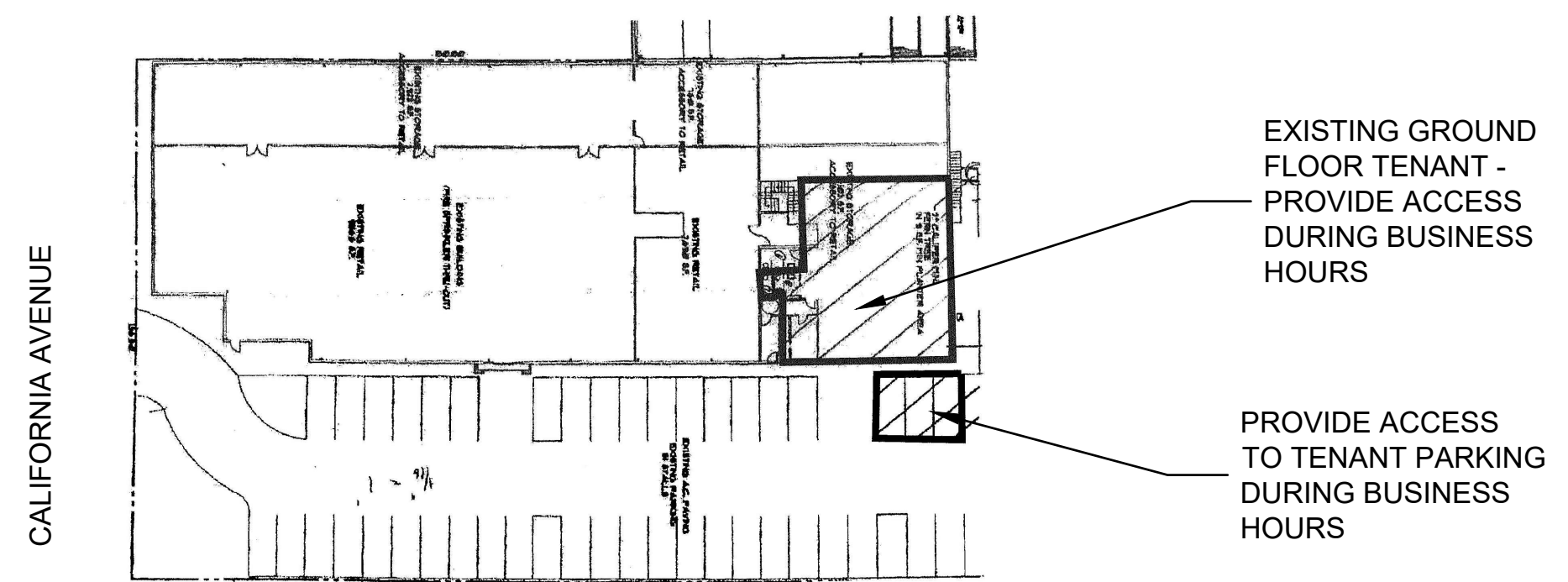
- P-6 ⁹/₁₃ PCS.
- P-7 9 PCS.
- P-12 ⁴/₁₄ PCS.
- P-13 ⁹/₁₄ PCS.
- P-15 2 PCS.
- P-18 ⁹/₁₄ PCS.
- P-19 ⁹/₂₆ PCS.

SEE 3/A-3 FOR PURLIN REPAIR DETAIL

TOTAL PURLINS TO BE REPAIRED = ⁴²/₇₃ PIECES.

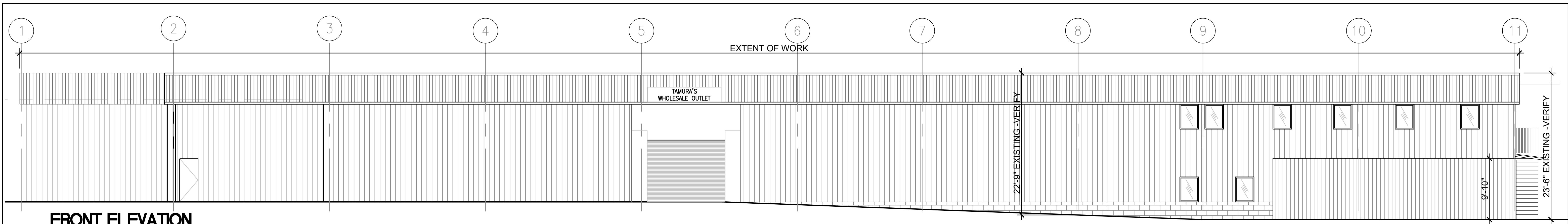
SITE PLAN

NOT TO SCALE



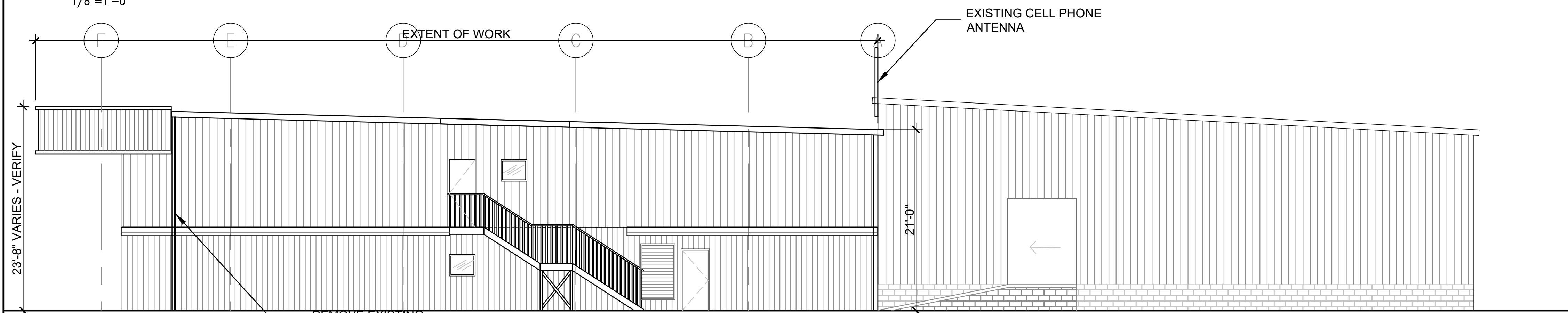
NOTE: LOCATION OF ROOF FANS, CONDUITS, ETC. ARE APPROXIMATE. CONTRACTOR TO FIELD VERIFY ALL ITEMS PRIOR TO STARTING WORK.

REVISION NO.	SYM.	DESCRIPTION	SHT./OF	DATE	APPROVED
STATE OF HAWAII DEPARTMENT OF AGRIBUSSINESS WAREHOUSE ROOFING IMPROVEMENTS					
ROOF PLAN - REPAIR PURLINS AND EXTENT OF WORK					
DESIGNED: SL		SUBMITTED:		DATE: MAY 2017	
DRAWN: SL		CHECKED: SL		SCALE: AS NOTED	
APPROVED:		SIGNATURE		DRAWING NO.	
CHIEF ENGINEER		EXPIRATION DATE OF LICENSE: APRIL 30, 2018		A-2	



FRONT ELEVATION

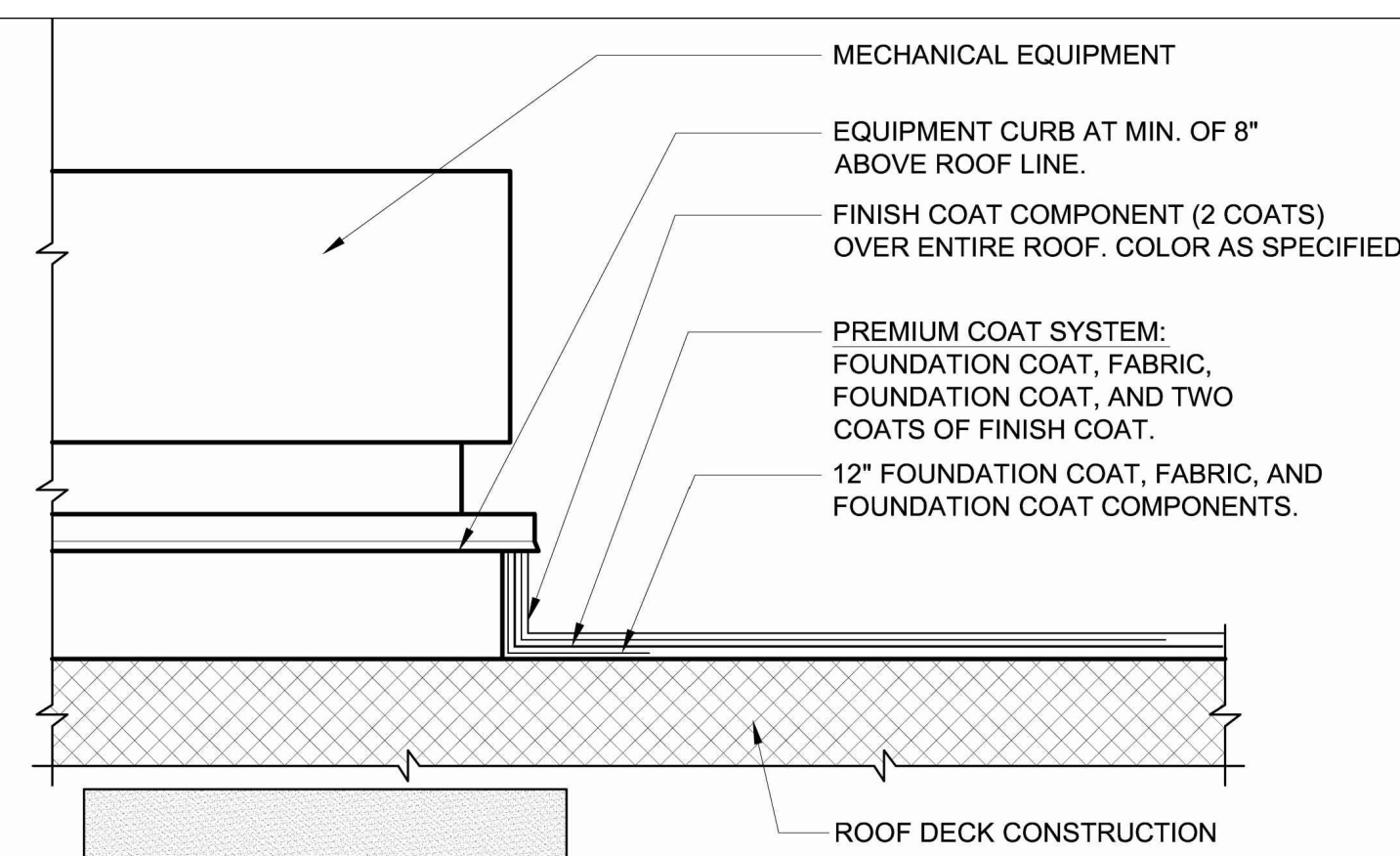
1/8"=1'-0"



RIGHT ELEVATION

1/8"=1'-0"

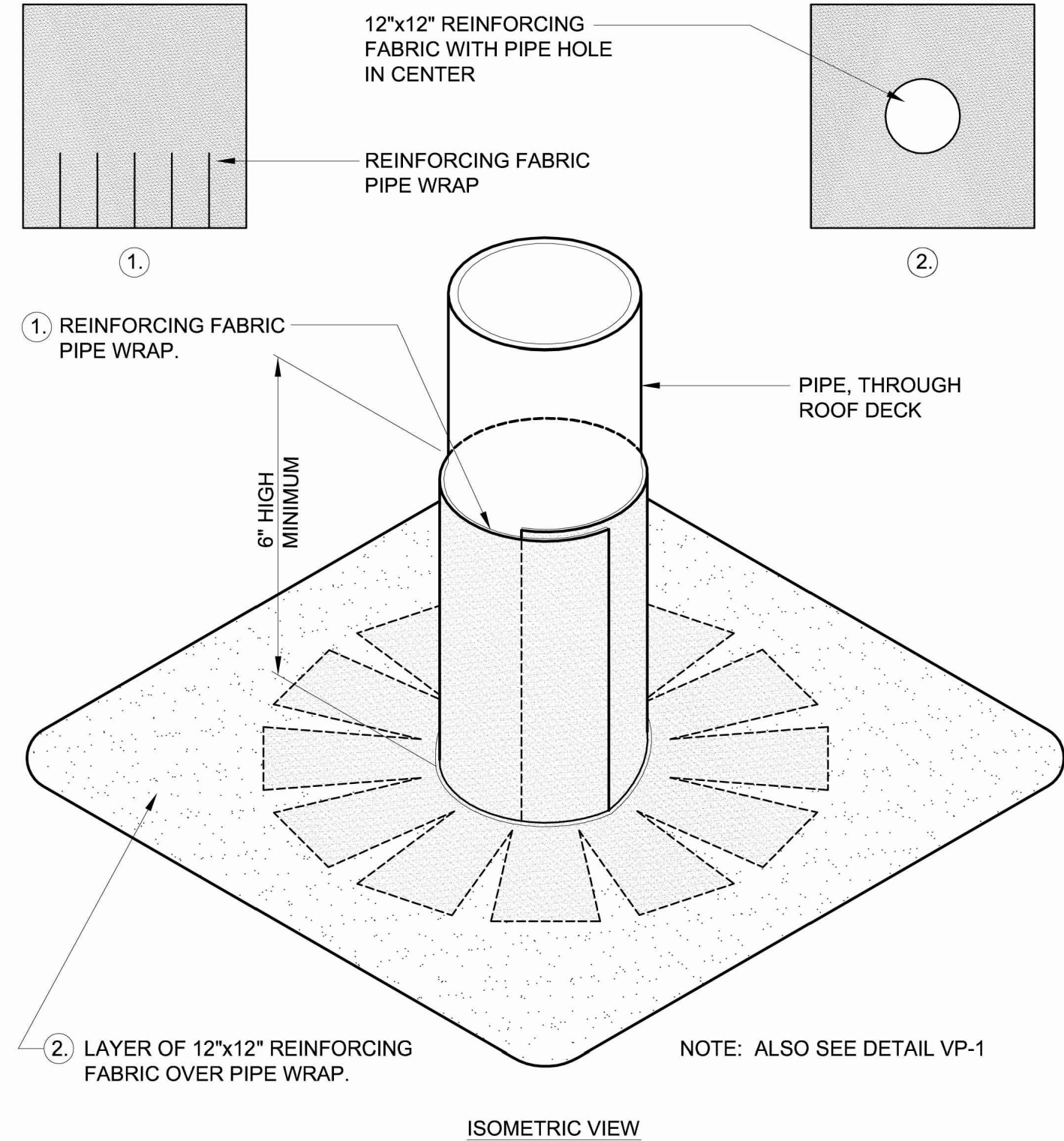
REMOVE EXISTING CONDUITS, WIRING AND SUPPORTS, ETC.



NOTES:

1. THIS DETAIL IS A TYPICAL FLASHING DETAIL AT EQUIPMENT CURBS.
2. PREPARE THE ROOF SURFACE AS PER MANUFACTURER'S REQUIREMENTS PRIOR TO APPLICATION OF ROOF COATING.
3. REFER TO THE SPECIFICATIONS FOR SPECIFIC EXECUTION REQUIREMENTS.
4. PREMIUM COAT SYSTEM- FOUNDATION COAT, FABRIC, FOUNDATION COAT, AND FINISH COAT COMPONENTS.
5. FOUNDATION COAT- COMBINED COVERAGE (2 COATS) AT MINIMUM RATE OF 40 SF/GALLON.
6. FINISH COAT- COMBINED COVERAGE (2 COATS) AT MINIMUM RATE OF 70 SF/GALLON.
7. PRIMING- REFER TO HYDROSTOP SPECIFICATIONS FOR DECK PRIMING REQUIREMENTS.

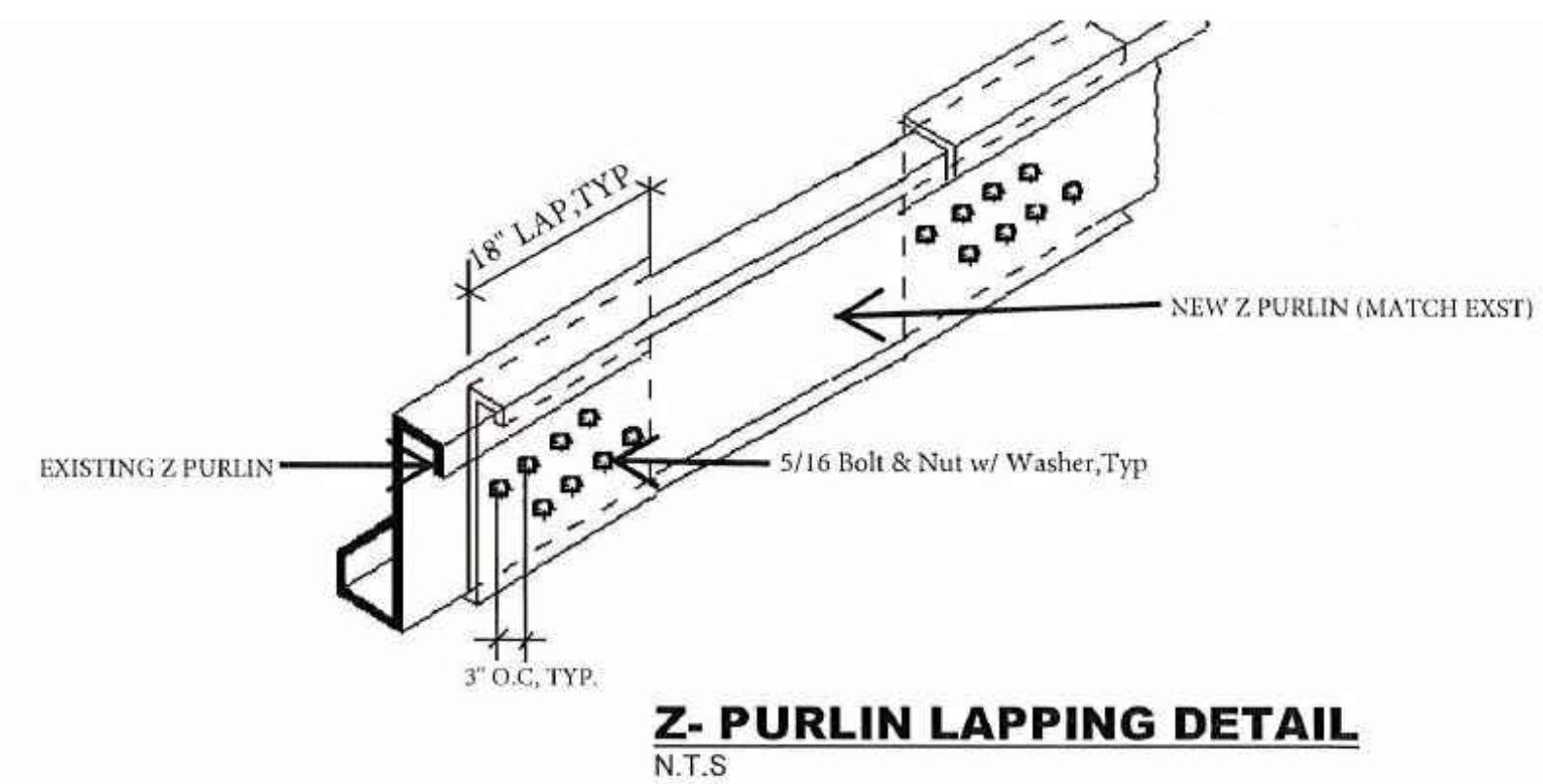
1 CURB DETAIL
NOT TO SCALE



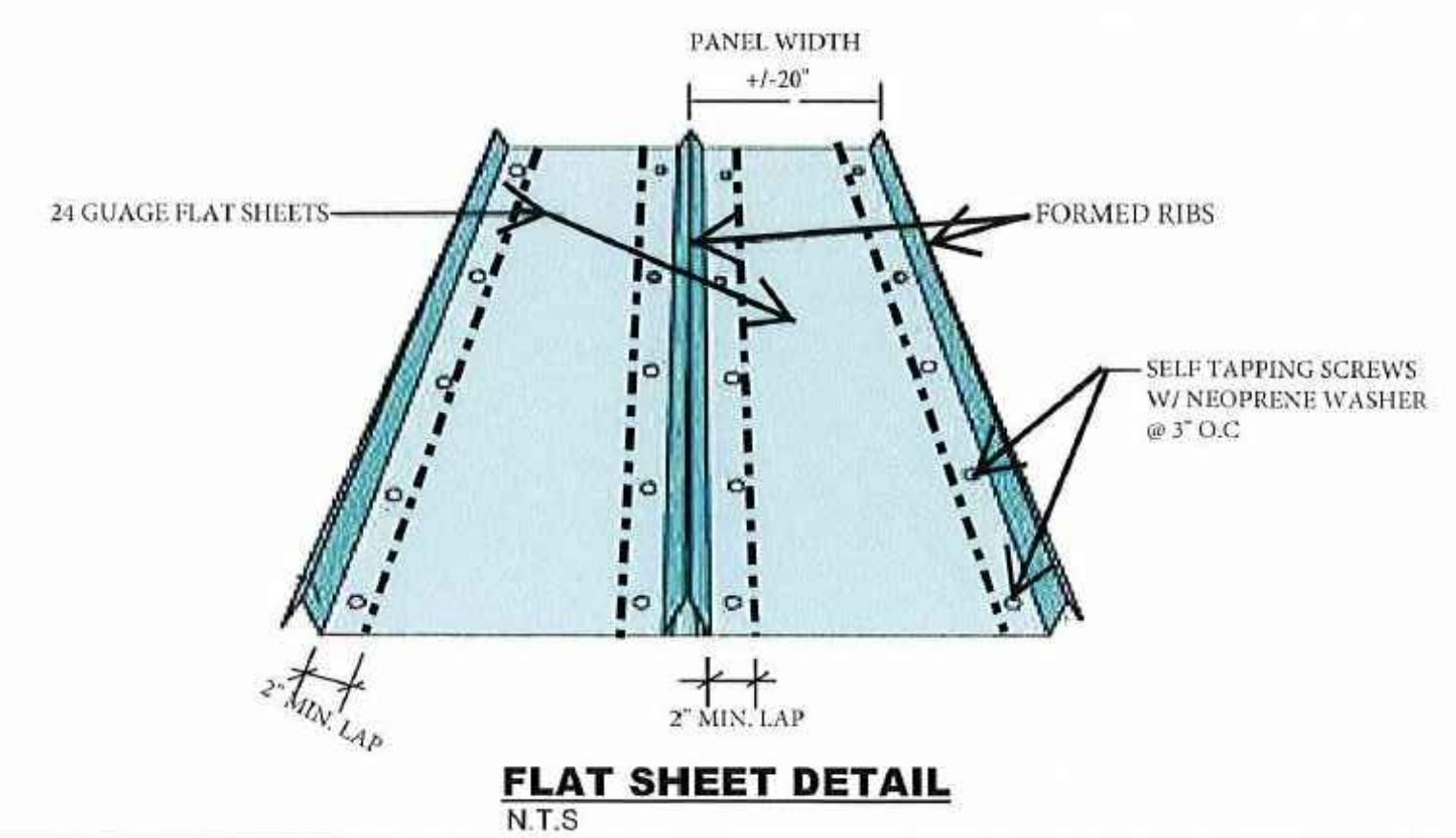
NOTES:

1. PREMIUM COAT SYSTEM- FOUNDATION COAT, FABRIC, FOUNDATION COAT, AND FINISH COAT COMPONENTS.
2. FOUNDATION COAT- COMBINED COVERAGE (2 COATS) AT MINIMUM RATE OF 40 SF/GALLON.
3. FINISH COAT- COMBINED COVERAGE (2 COATS) AT MINIMUM RATE OF 70 SF/GALLON.
4. PRIMING- REFER TO HYDROSTOP SPECIFICATIONS FOR DECK PRIMING REQUIREMENTS.

2 VENT THRU ROOF DETAIL
NOT TO SCALE



Z-PURLIN LAPPING DETAIL
N.T.S



FLAT SHEET DETAIL
N.T.S

3 PURLIN REPAIR DETAIL
NOT TO SCALE

REVISION NO.	SYM.	DESCRIPTION	SHT./OF	DATE	APPROVED
STATE OF HAWAII DEPARTMENT OF AGRIBUSSINESS WAREHOUSE ROOFING IMPROVEMENTS					
EXTERIOR ELEVATIONS AND DETAILS					
DESIGNED: SL			SUBMITTED:		
DRAWN: SL			DATE: MAY 2017		
CHECKED: SL			SCALE: AS NOTED		
APPROVED:			DRAWING NO.		
SIGNATURE			DATE		
EXPIRATION DATE OF LICENSE:			DATE		
APRIL 30, 2018			A-3		



PHOTO 1

1 PHOTO
EXISTING METAL ROOFING
NOT TO SCALE

EXISTING METAL ROOFING TO REMAIN



PHOTO 2

2 PHOTO
EXISTING METAL ROOFING
NOT TO SCALE

REMOVE EXISTING EXHAUST FAN



PHOTO 3

3 PHOTO
EXIST VTR AND DUCT OPENING
NOT TO SCALE

TYPICAL - PROPERLY FLASH ALL VTR'S



PHOTO 4

4 PHOTO
NOT TO SCALE



PHOTO 5

5 PHOTO
NOT TO SCALE



PHOTO 6

6 PHOTO
NOT TO SCALE

TYPICAL - CONTRACTOR SHALL REMOVE ALL TEMPORARY PLASTIC SHEATHING, FLASHING, ETC IN ORDER TO COMPLETE THE WORK

TYPICAL - CONTRACTOR SHALL REMOVE EXISTING METAL ROOFING AND COATING, PREP FRAME TO RECEIVE NEW STATE FURNISHED METAL ROOFING AND INSTALL METAL ROOFING ACCORDING TO THE MANUFACTURER'S RECOMMENDATIONS.



PHOTO 7

7 PHOTO
NOT TO SCALE

TYPICAL - CONTRACTOR SHALL REMOVE EXISTING METAL ROOFING AND COATING, PREP FRAME TO RECEIVE NEW STATE FURNISHED METAL ROOFING AND INSTALL METAL ROOFING ACCORDING TO THE MANUFACTURER'S RECOMMENDATIONS.



PHOTO 8

8 PHOTO
NOT TO SCALE



PHOTO 9

9 PHOTO
NOT TO SCALE

REVISION NO.	SYM.	DESCRIPTION	SHT./OF	DATE	APPROVED
STATE OF HAWAII DEPARTMENT OF AGRIBUSSINESS WAREHOUSE ROOFING IMPROVEMENTS					
PHOTOS					
DESIGNED: SL			SUBMITTED:		
DRAWN: SL			DATE: MAY 2017		
CHECKED: SL			SCALE: AS NOTED		
APPROVED:			DRAWING NO.		
SIGNATURE			DATE		
EXPIRATION DATE OF LICENSE:			CHIEF ENGINEER		
APRIL 30, 2018			A-4		