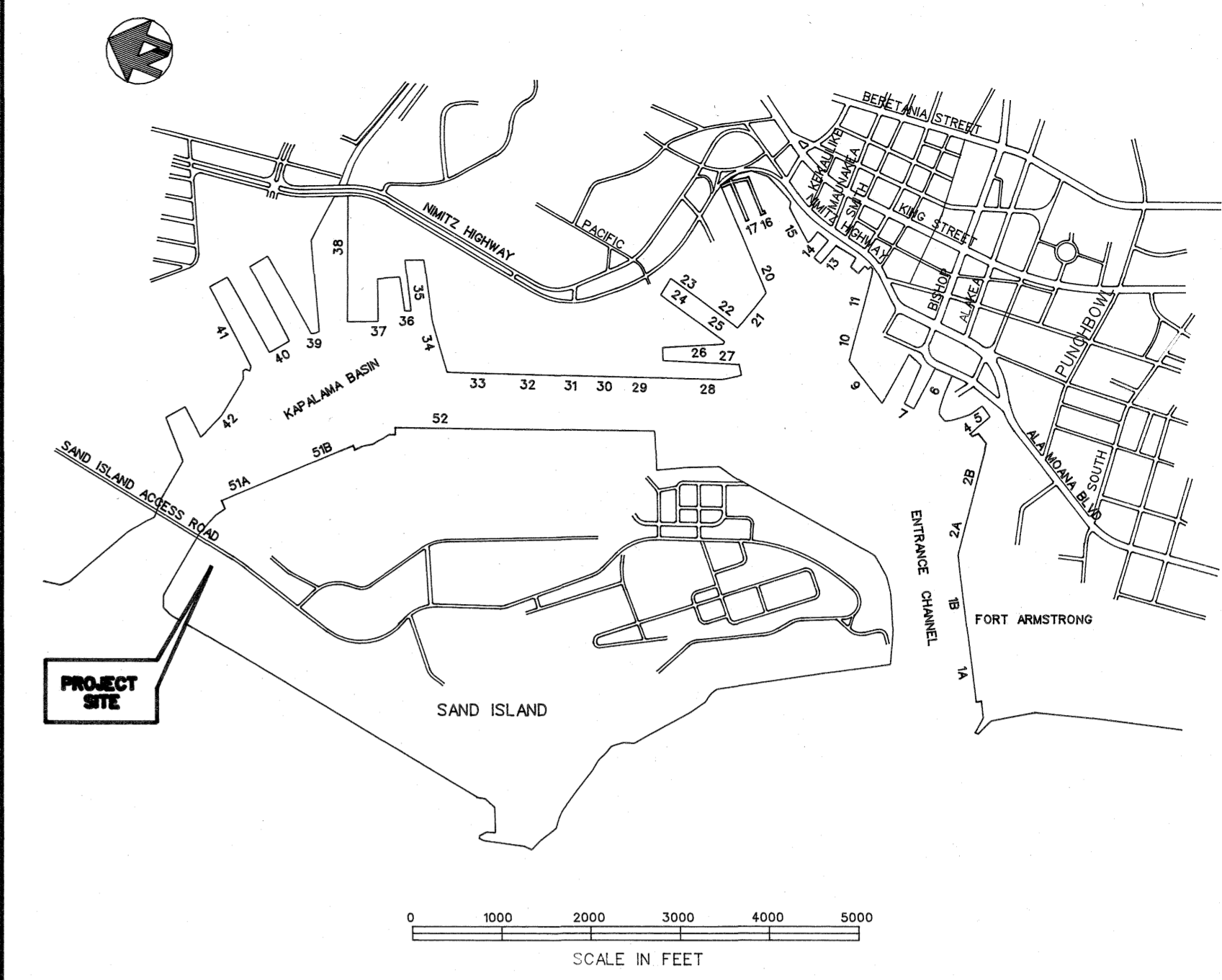
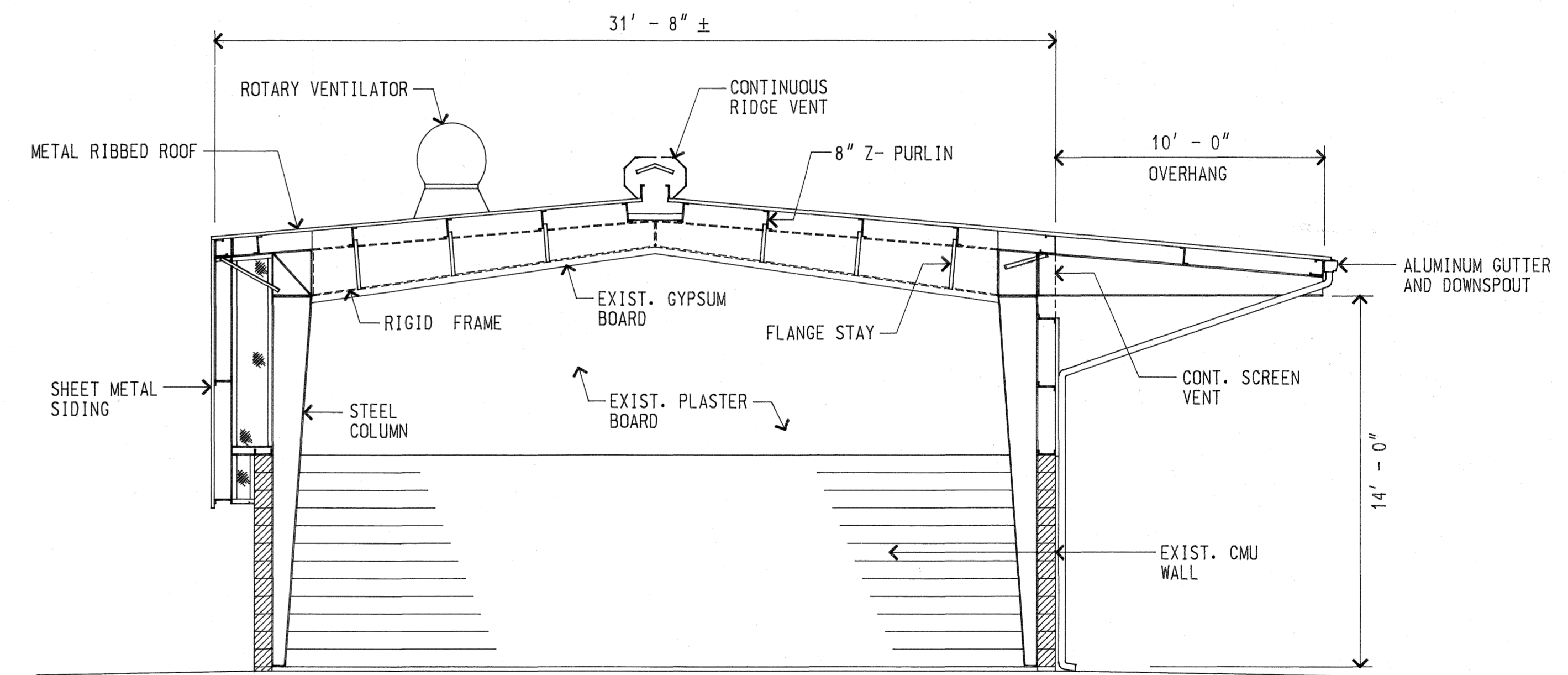


REMOVE AND REPLACE EXISTING METAL RIBBED ROOF WITH NEW CORRUGATED ALUMINUM ROOF. REMOVE AND REPLACE EXISTING METAL PURLINS, STAYS, SAG RODS, VENTILATORS, RIDGE CAP, ETC.. REINSTALL EXISTING ROTARY VENTILATORS AND GUTTER SYSTEM.

- GENERAL NOTES :**
1. CONTRACTOR SHALL VERIFY DIMENSIONS AND CONDITIONS IN FIELD PRIOR TO ORDERING NEW MATERIAL.
 2. CONTRACTOR SHALL REMOVE AND REPLACE EXISTING METAL ROOF, PURLINS, SAG RODS, STAYS, VENTILATORS, RIDGE/HIP CAP, ETC.
 3. CONTRACTOR SHALL CLEAN AND PAINT NEW PURLINS, ROOFING, SAG RODS, ANGLE CLIPS, PURLIN BRACING, STAYS, RIDGE/HIP CAP AND VENTILATOR, GUTTERS AND TOP SURFACE OF EXISTING RIGID FRAME.
 4. EXISTING LIGHT FIXTURES SHALL BE TEMPORARILY REMOVED AND REINSTALLED. CONTRACTOR SHALL REALIGN CONDUITS, BRACKETS, ETC. AS NEEDED TO INSTALL EXISTING LIGHTING SYSTEM ON NEW PURLINS.
 5. ALL ROOF PENETRATIONS SHALL BE SEALED WATERTIGHT IN ACCORDANCE WITH ROOFING MANUFACTURER'S RECOMMENDATIONS.
 6. CONTRACTOR SHALL PLACE NEW ROOF INSULATION PRIOR TO NEW ROOF PANEL INSTALLATION AND IN ACCORDANCE WITH THE MANUFACTURER'S RECOMMENDATIONS.



LOCATION MAP - HONOLULU HARBOR

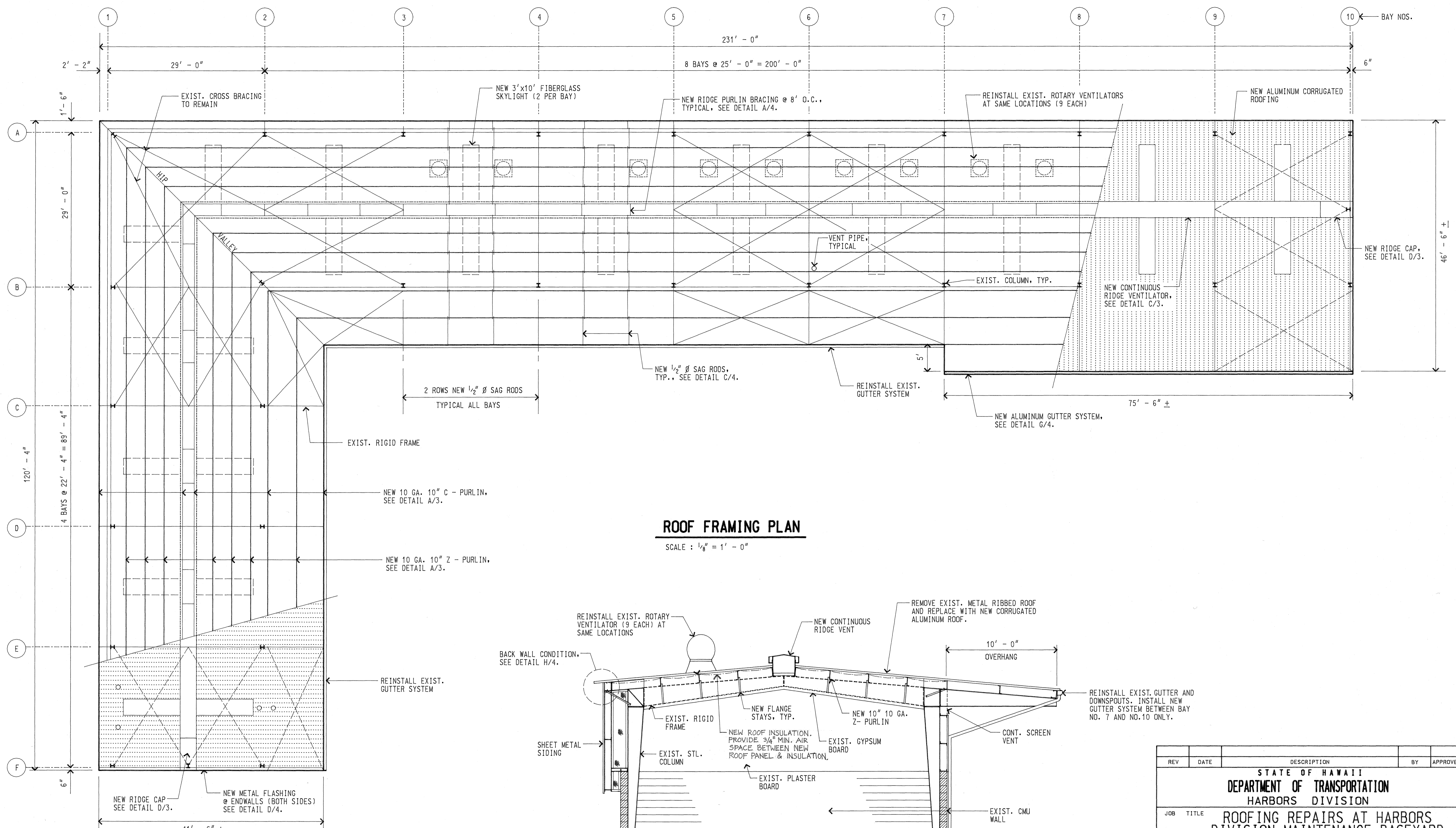


A
1 **EXISTING BUILDING SECTION**
SCALE : 1/4" = 1' - 0"

SITE PLAN - HARBORS DIVISION MAINTENANCE BASEYARD

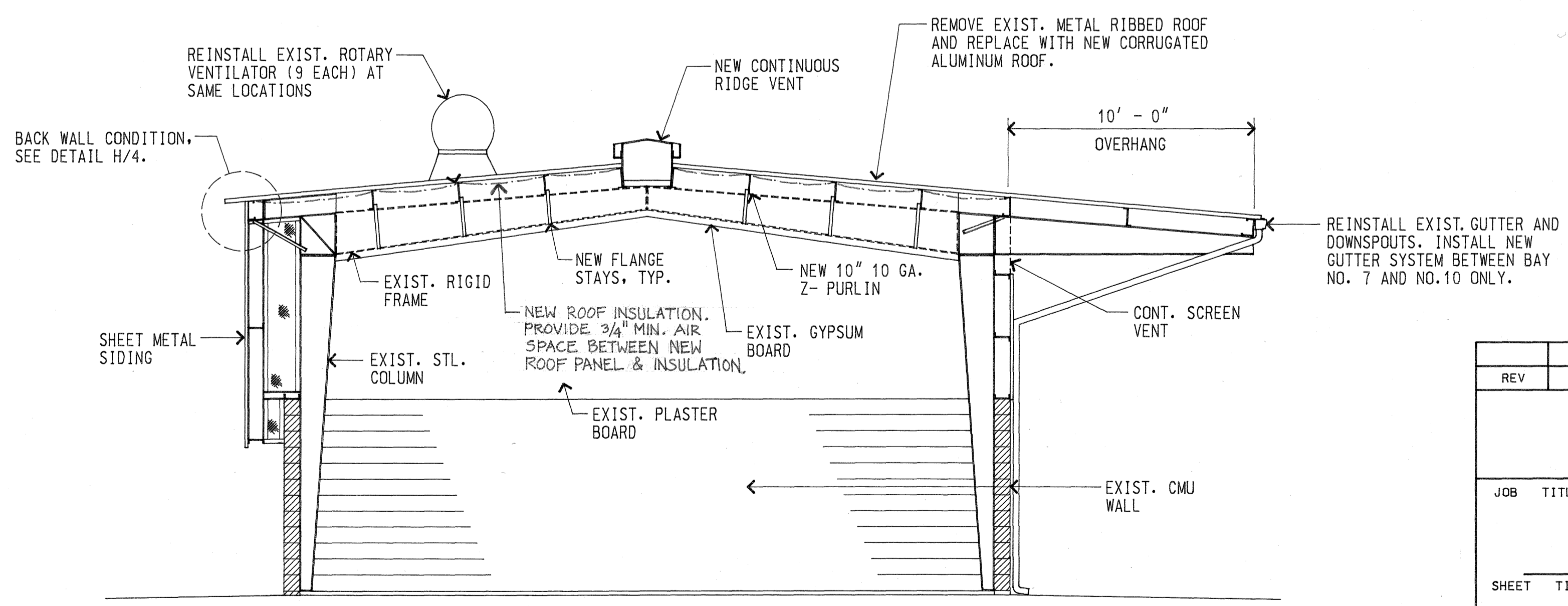
SCALE : 1" = 20'

REV	DATE	DESCRIPTION	BY	APPROVED
STATE OF HAWAII DEPARTMENT OF TRANSPORTATION HARBORS DIVISION				
JOB TITLE ROOFING REPAIRS AT HARBORS DIVISION MAINTENANCE BASEYARD HONOLULU, HAWAII				
SHEET TITLE SITE PLAN, EXISTING BUILDING SECTION				
SUBMITTED BY: <i>Kelly Lee Sato</i>		RECOMMENDED BY: <i>Harvey M. ...</i>		
DESIGNED BY: DCA		APPROVED BY: <i>[Signature]</i>		SHEET
DRAWN BY: DCA/CHM		CHIEF, HARBORS DIVISION		1
CHECKED BY: KLS		JOB NUMBER		1
DATE: MAY 1997		H.C. 1966		1 OF 4 SHTS.
SCALE: AS SHOWN				



ROOF FRAMING PLAN

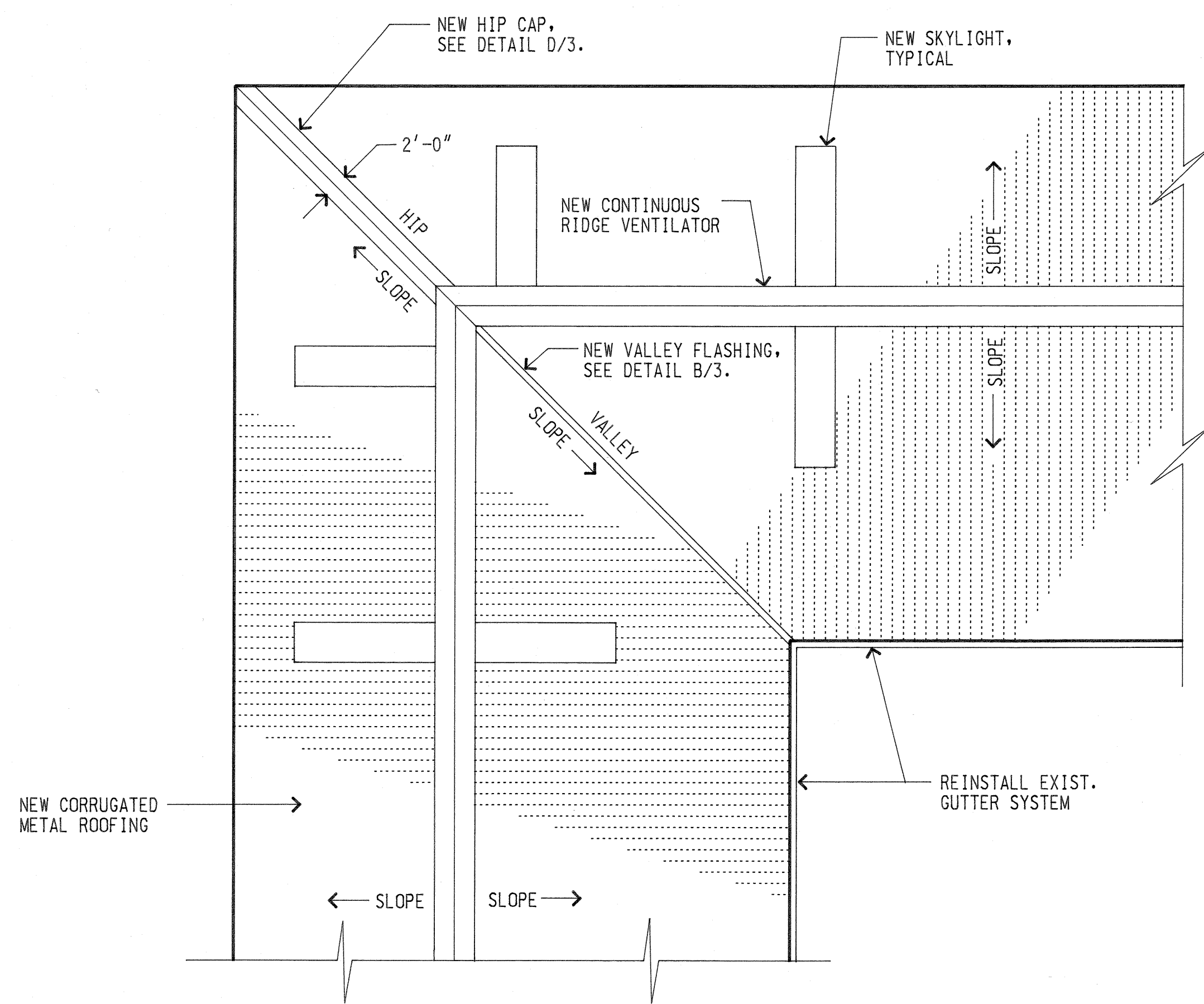
SCALE : 1/8" = 1' - 0"



TYPICAL SECTION THRU NEW ROOF

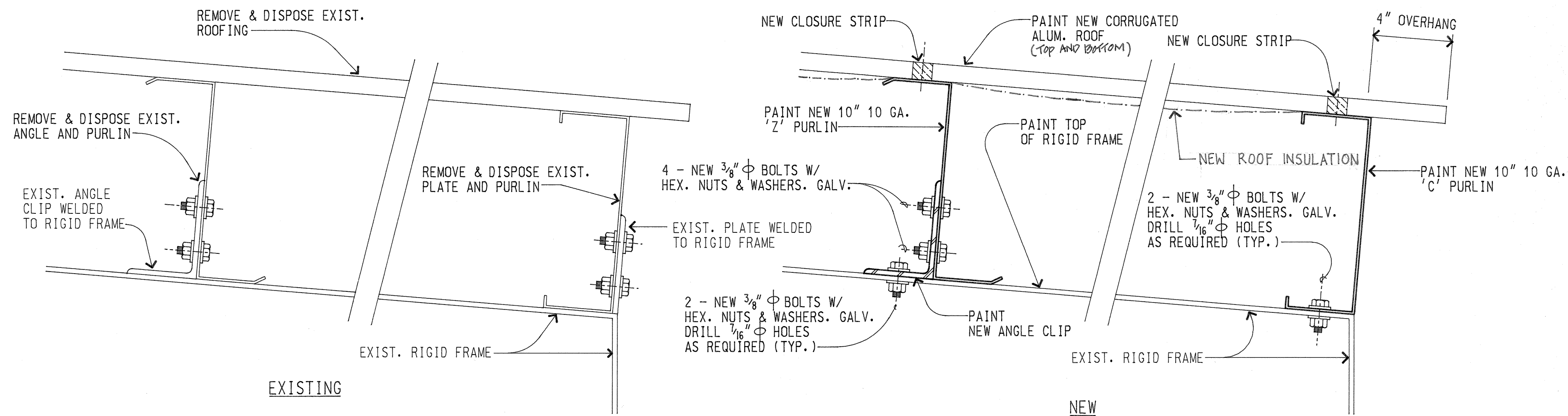
SCALE : 1/4" = 1' - 0"

REV	DATE	DESCRIPTION	BY	APPROVED
STATE OF HAWAII DEPARTMENT OF TRANSPORTATION HARBORS DIVISION				
JOB TITLE ROOFING REPAIRS AT HARBORS DIVISION MAINTENANCE BASEYARD HONOLULU, HAWAII				
SHEET TITLE ROOF FRAMING PLAN, TYPICAL SECTION THRU NEW ROOF				
SUBMITTED BY: <i>Kelly Lee Soto</i>		RECOMMENDED BY: <i>James B. Mendenhall</i>		
DESIGNED BY: DCA		APPROVED BY: <i>James B. Mendenhall</i>		
DRAWN BY: DCA		CHIEF, HARBORS DIVISION		
CHECKED BY: KLS		JOB NUMBER		
DATE: MAY 1997		H.C. 1966		
SCALE: AS NOTED		2 OF 4 SHTS.		



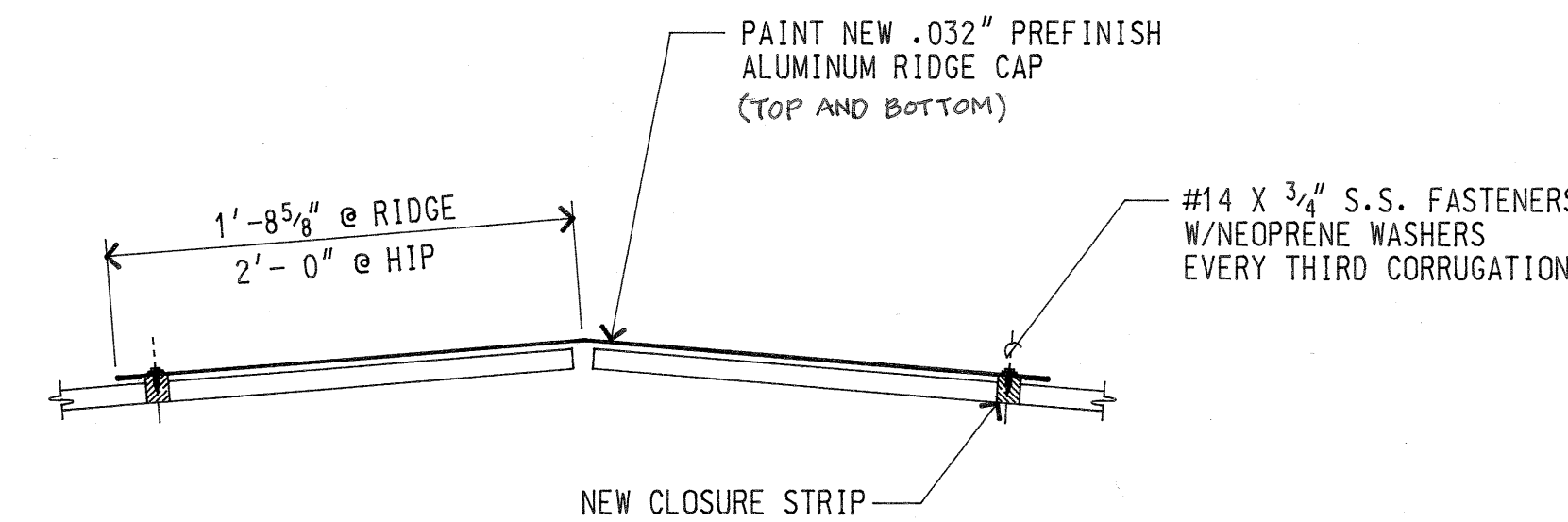
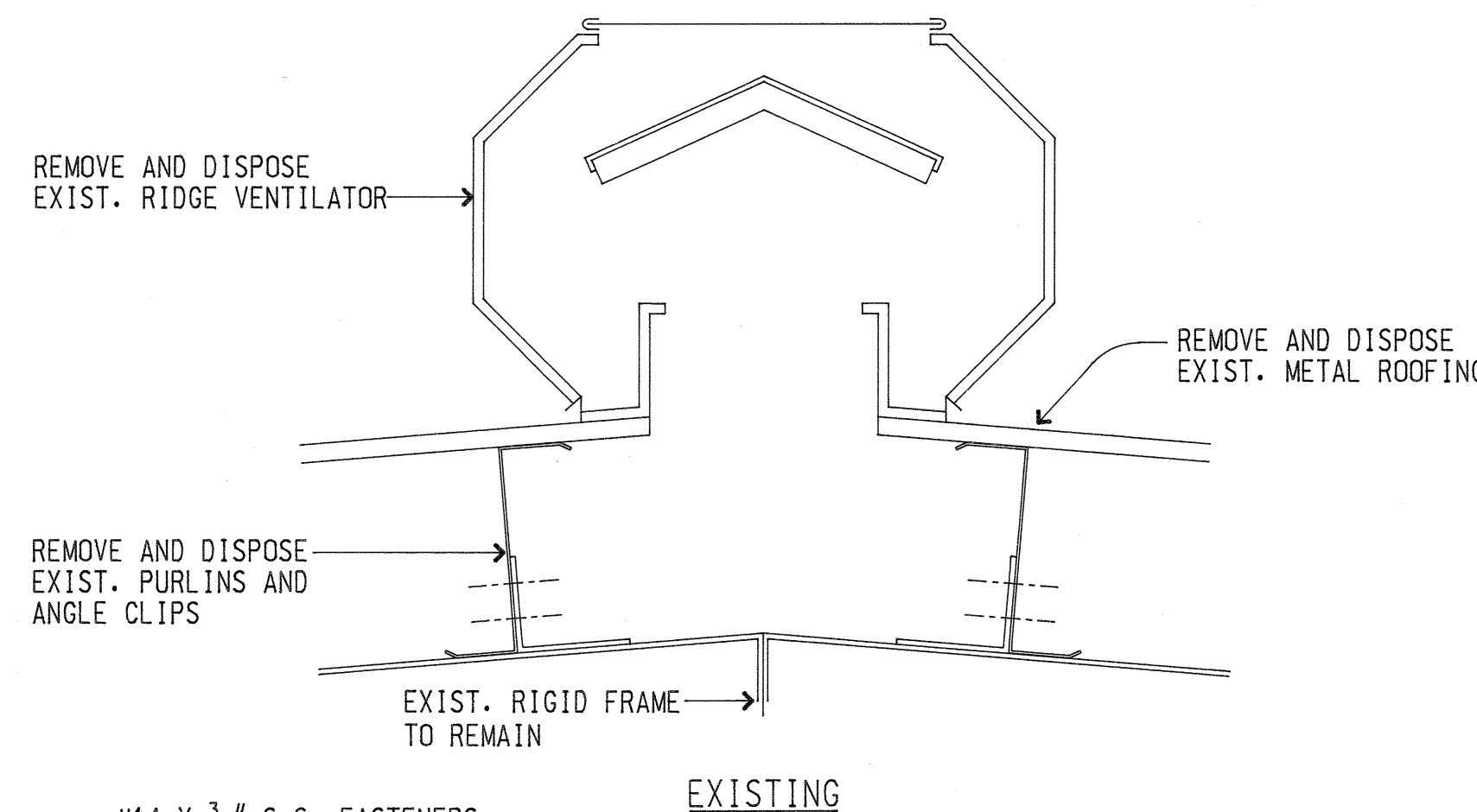
ROOF HIP/VALLEY PLAN

SCALE: 1/8" = 1' - 0"



A NEW PURLIN DETAIL

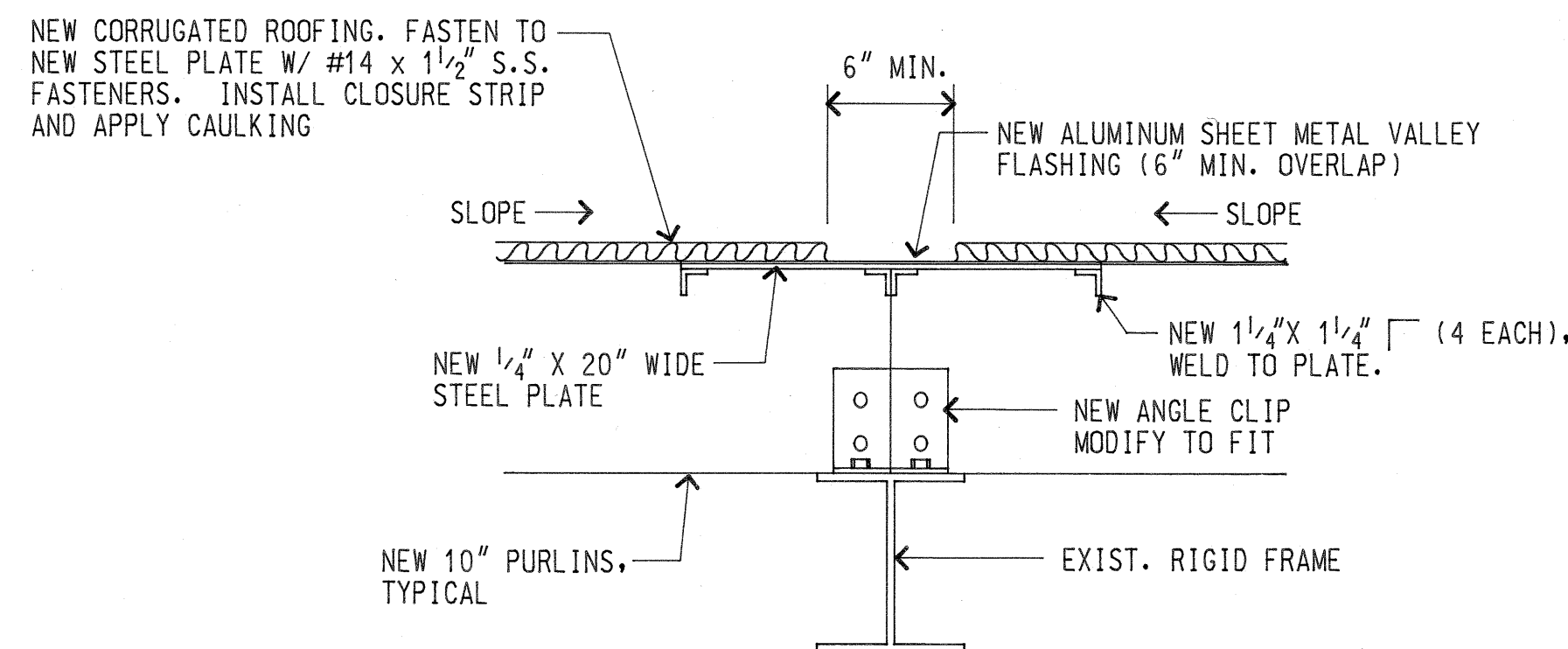
SCALE: 3" = 1' - 0"



D RIDGE/HIP CAP DETAIL

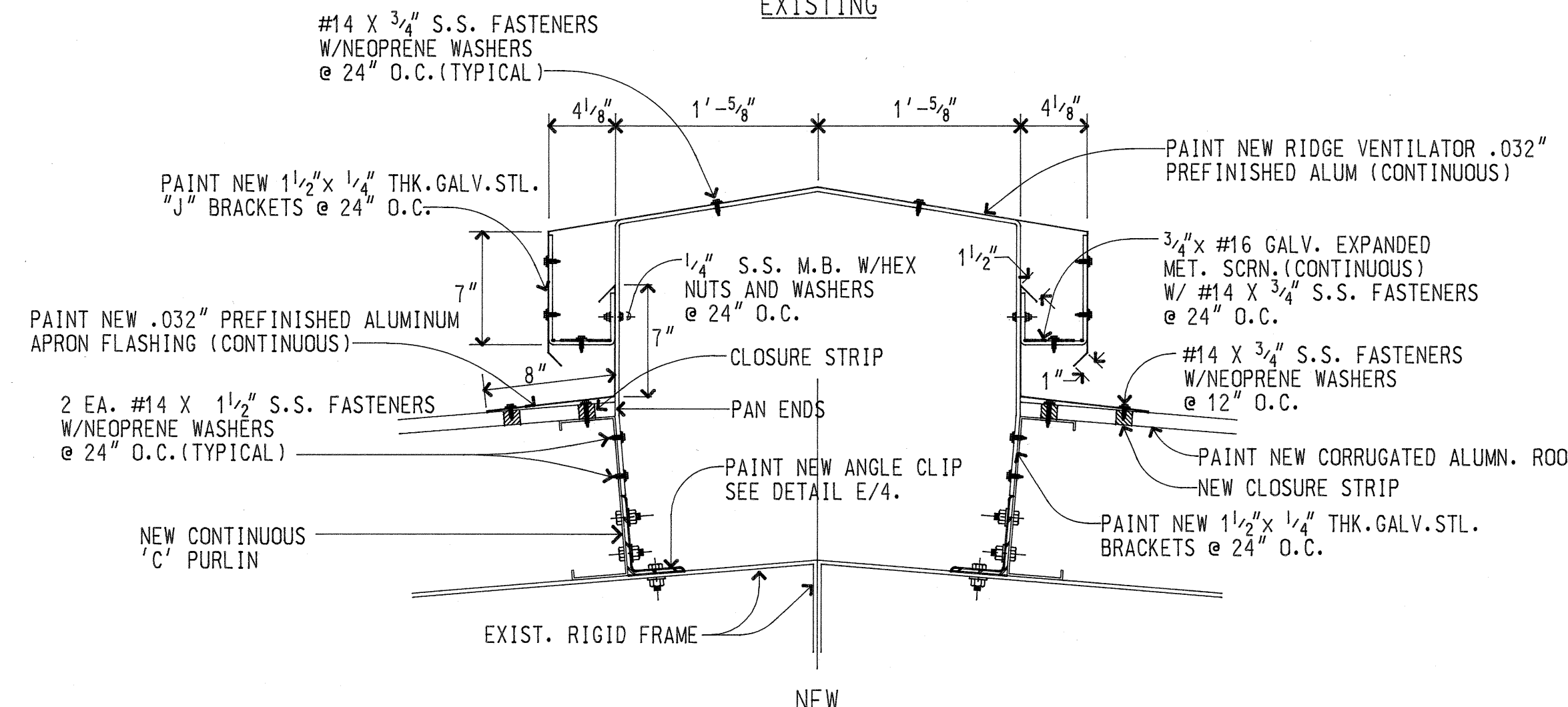
SCALE: 1 1/2" = 1' - 0"

SEE ROOF FRAMING PLAN FOR LOCATIONS OF NEW RIDGE CAPS



B VALLEY FLASHING DETAIL

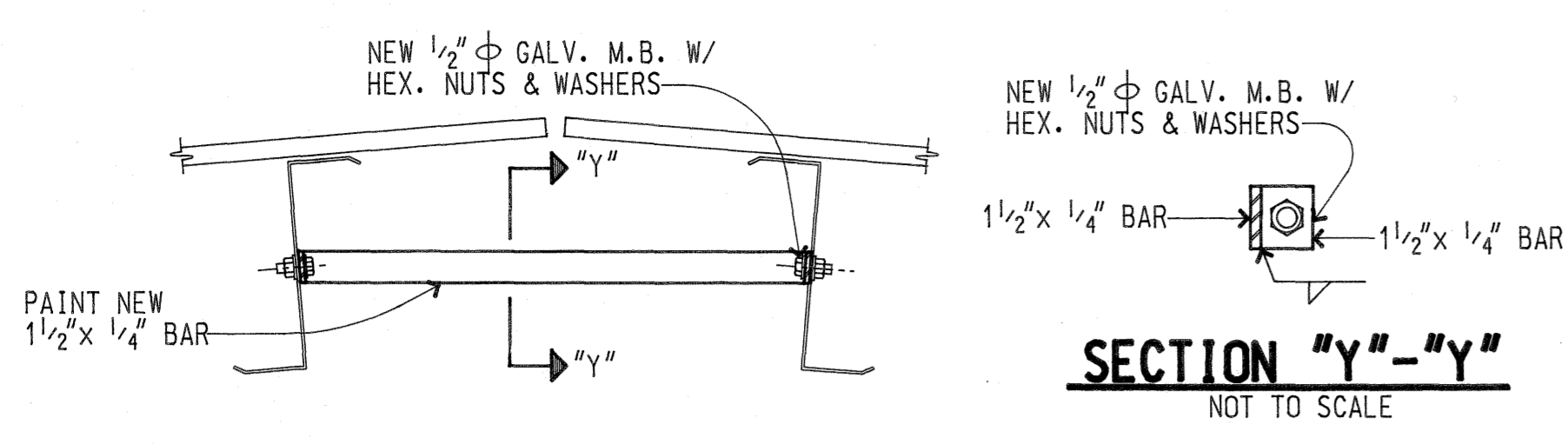
SCALE: 1 1/2" = 1' - 0"



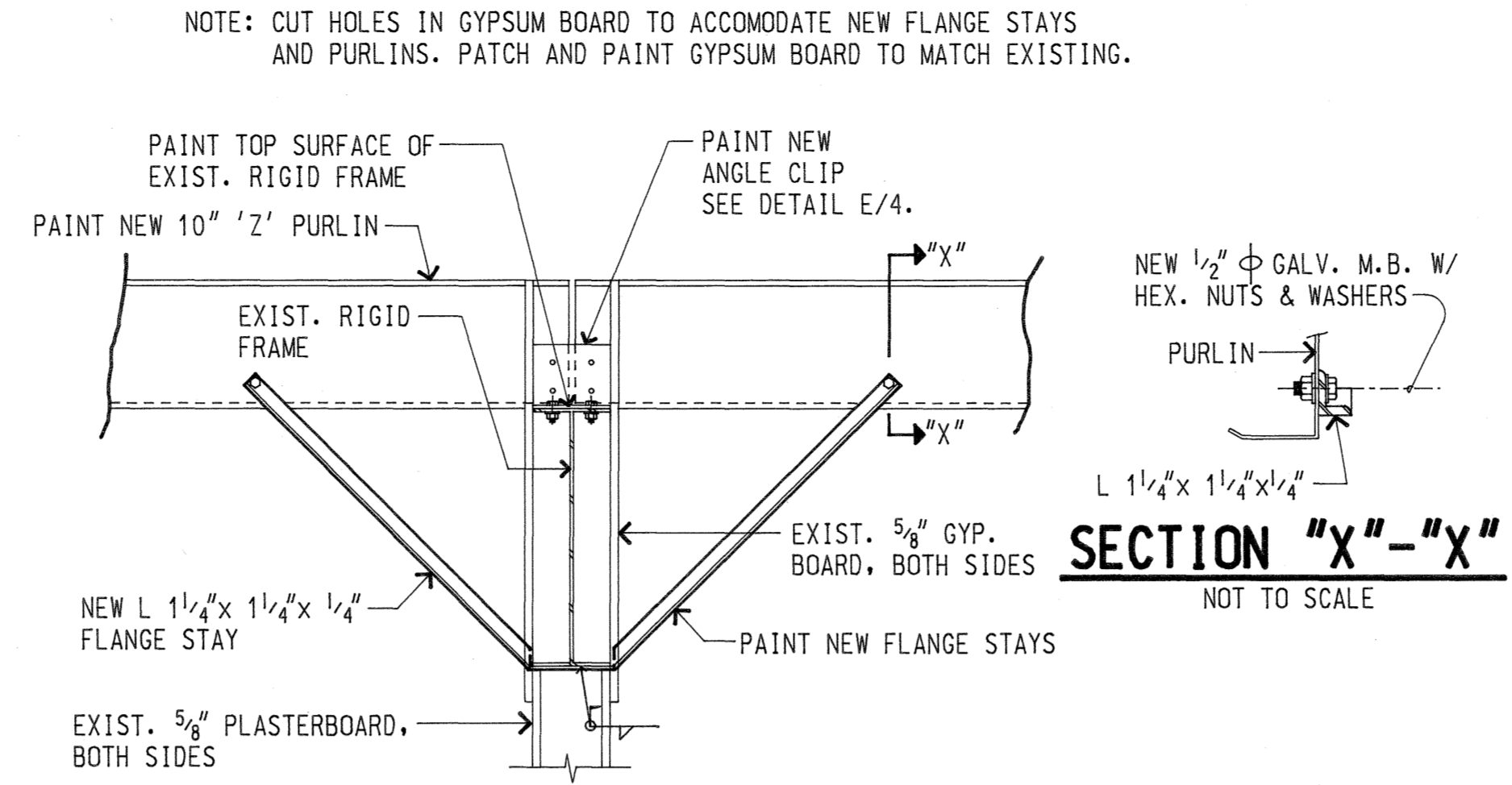
C RIDGE VENTILATOR DETAIL

SCALE: 1 1/2" = 1' - 0"

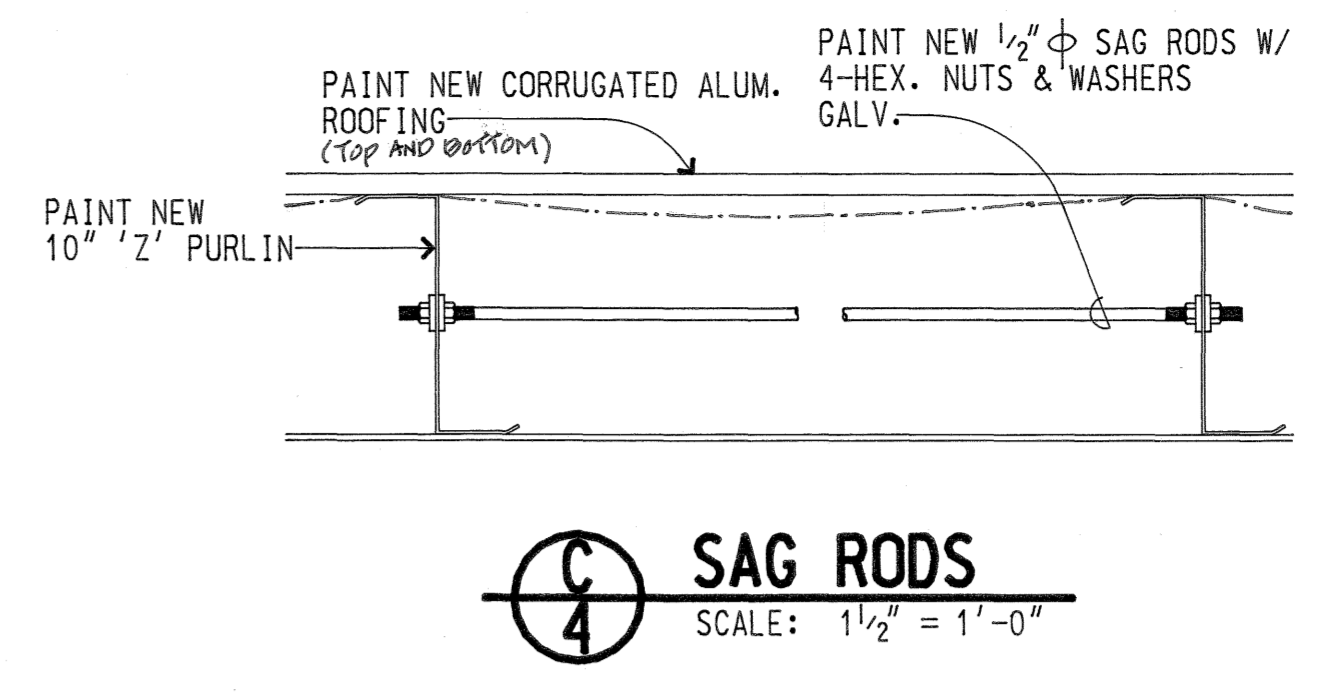
REV	DATE	DESCRIPTION	BY	APPROVED
STATE OF HAWAII DEPARTMENT OF TRANSPORTATION HARBORS DIVISION				
JOB TITLE ROOFING REPAIRS AT HARBORS DIVISION MAINTENANCE BASEYARD HONOLULU, HAWAII				
SHEET TITLE ROOF HIP/VALLEY PLAN, PURLIN, FLASHING, RIDGE VENT & CAP DETAILS				
SUBMITTED BY: <i>Kelly de Soto</i>		RECOMMENDED BY: <i>Henry H. Muraoka</i>		
DESIGNED BY: DCA		APPROVED BY: <i>Henry H. Muraoka</i>		
DRAWN BY: DCA/CHM		CHIEF, HARBORS DIVISION		
CHECKED BY: KLS		JOB NUMBER		
DATE: MAY 1997		H.C. 1966		
SCALE: AS NOTED		3 OF 4 SHTS.		



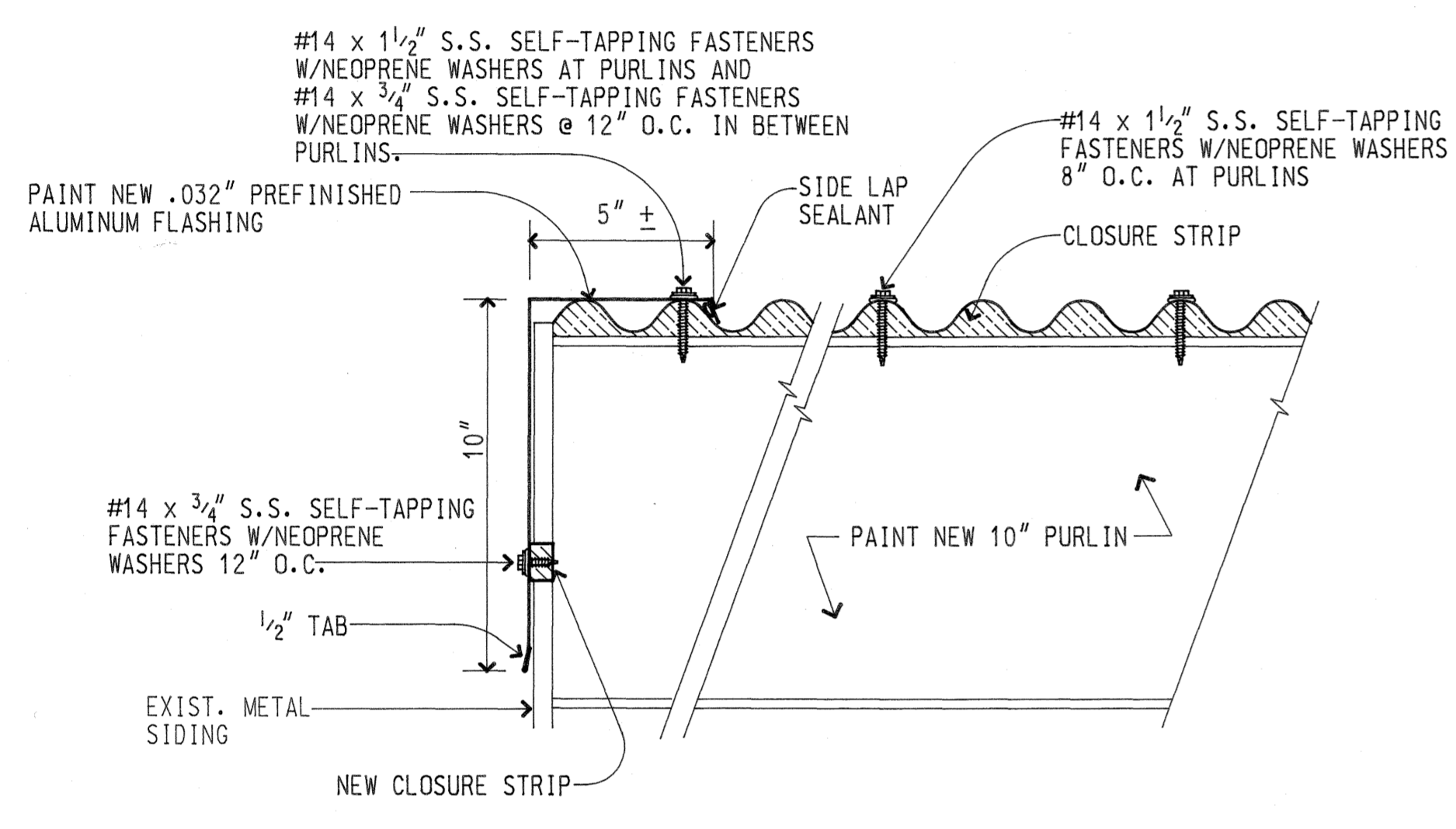
A RIDGE PURLIN BRACING DETAIL
SCALE: 1 1/2" = 1' - 0"



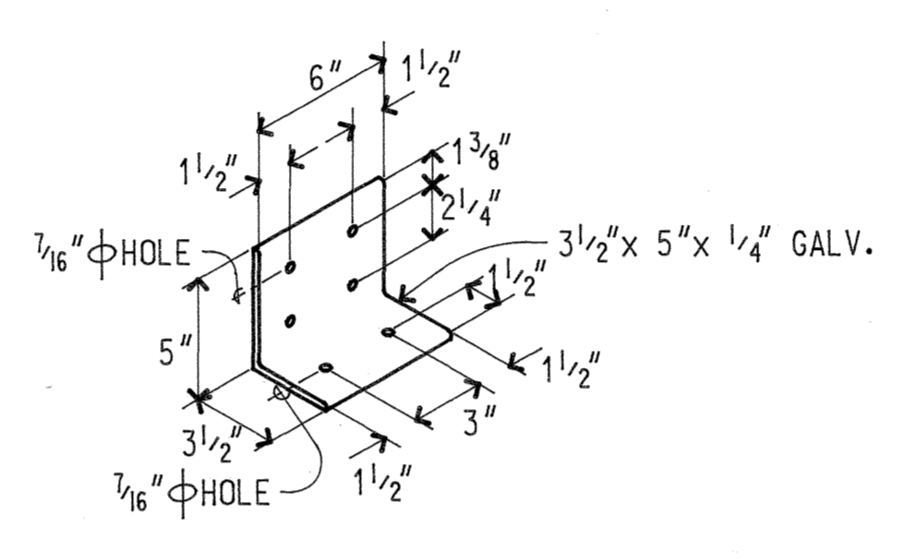
B NEW FLANGE STAY DETAIL
SCALE: 1" = 1' - 0"



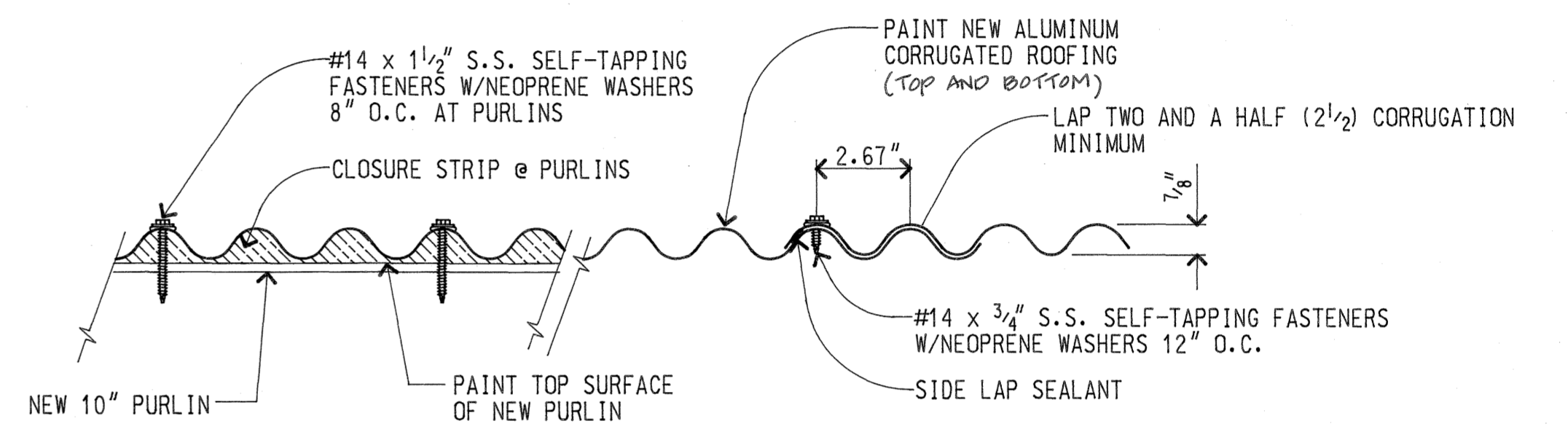
C SAG RODS
SCALE: 1 1/2" = 1' - 0"



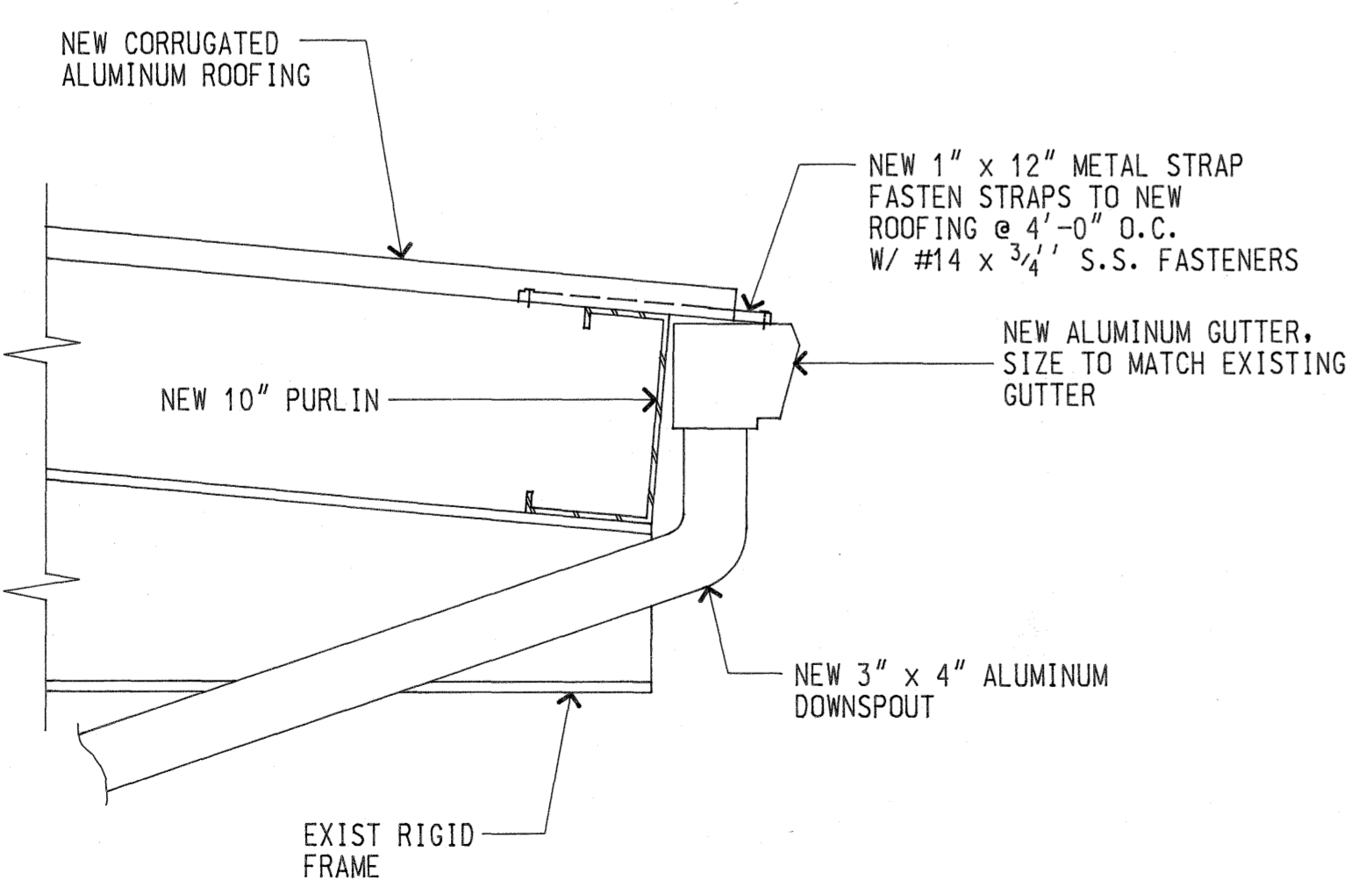
D END WALL FLASHING DETAIL
SCALE: 3" = 1' - 0"



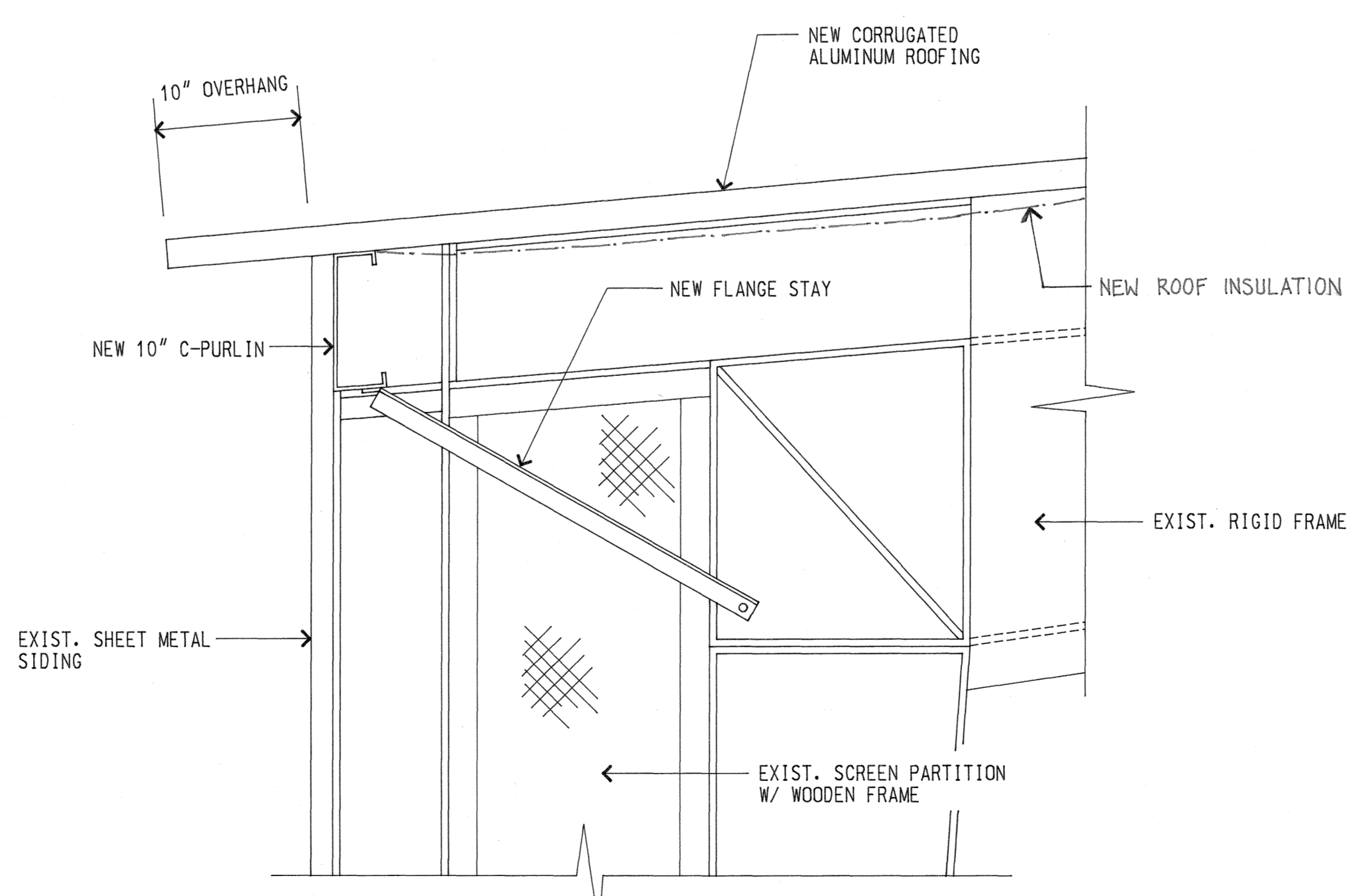
E ANGLE CLIP DETAIL
NOT TO SCALE



F CORRUGATED ROOFING DETAIL
SCALE: 3" = 1' - 0"



G NEW GUTTER DETAIL
SCALE: 1 1/2" = 1' - 0"



H BACK WALL DETAIL
SCALE: 1 1/2" = 1' - 0"

REV	DATE	DESCRIPTION	BY	APPROVED
STATE OF HAWAII DEPARTMENT OF TRANSPORTATION HARBORS DIVISION				
JOB TITLE: ROOFING REPAIRS AT HARBORS DIVISION MAINTENANCE BASEYARD HONOLULU, HAWAII				
SHEET TITLE: NEW ROOF DETAILS				
SUBMITTED BY: Kelly Lee Sato		RECOMMENDED BY: Henry J. Muraoka		
DESIGNED BY: DCA		APPROVED BY: [Signature]		
DRAWN BY: DCA/CHM		CHIEF, HARBORS DIVISION		
CHECKED BY: KLS		JOB NUMBER: H.C. 1966		
DATE: MAY 1997		SCALE: AS NOTED		
				SHEET 4 4 OF 4 SHTS.